



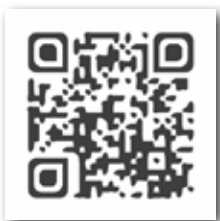
Cereals



Gerry

Quality for all

Find more information on our website :
www.agriobtentions.eu



- Early maturity and very productive
- BPS (High quality bread wheat) - Recommended by french millers
- PCH1 - OWBM Resistant - Chlortoluron Tolerant
- Very good tolerant to lodging

FINAL EVALUATION
102.6%
Official trial CTPS 2018/19 yield as % controls

Registration : France 2019
Breeder code : AO15012
Awns : Awn
Growing area :

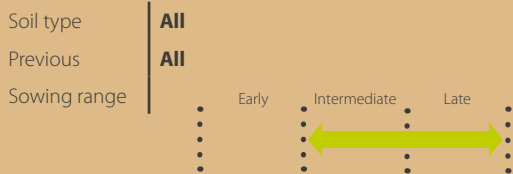


Gerry

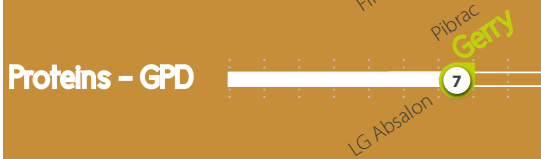
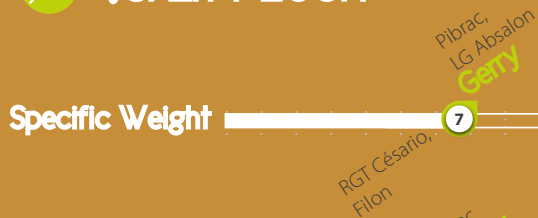
+ STRENGTHS

- . Early maturity and very productive
- . BPS (High quality bread wheat) – Recommended by french millers
- . PCH1 – OWBM Resistant – Chlortoluron tolerant
- . Very good tolerance to lodging

SOWING*



QUALITY ZOOM



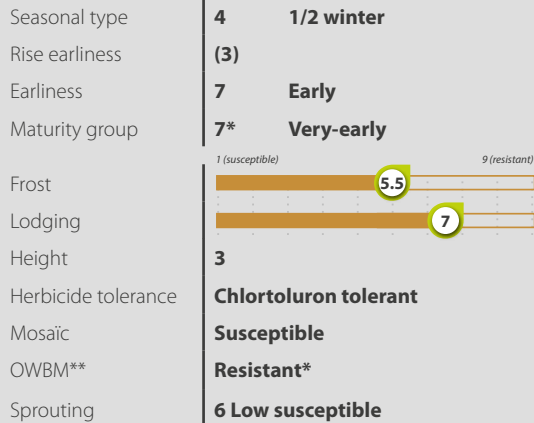
Market access indicators

- . 59 % Superior
- . 38 % Premium

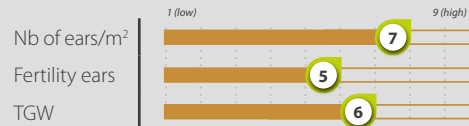
CULTIVATION ADVICE

Highly resistant to lodging and carrying the resistance gene to the eyespot, GERRY allows you to reduce the use of growth regulation and optimize your harvest.

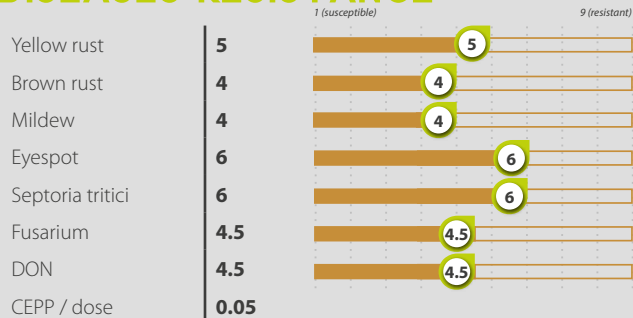
PLANTS



YIELD COMPONENT



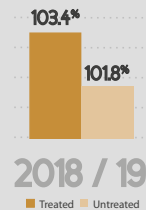
DISEASES RESISTANCE



YIELD PERFORMANCE



Official trial CTPS 2018/19 yield as % of controls Oregrain(18), Rubisko, Pibrac, Filon, LG Absalon (19).



TECHNOLOGICAL QUALITY

Baking quality	BPS (High quality bread wheat)	Hardness	Medium-Hard
Profil	Recommended by french millers	Volume	
W at 11.5% protein content	Extensible	Hydratation	
P/L at 11.5% protein content	145-180	Zeleny	15-40
Protein content	1.3-2.2	Hagberg	High
	4		