



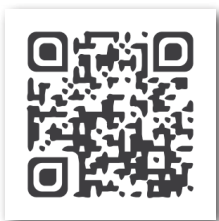
Cereals



Grekaeu

Quality is its best weapon

Find more information on our website :
www.agriobtentions.eu



- Very good baking quality / Extensible type
- High Specific Weight and Protein content
- Excellent diseases resistance
- High yield potential

**FINAL
COTATION
102.8%**

Official trial CTPS 2019/20 yield
as % controls

Registration : France 2020
Breeder code : CF15232
Awns : Awn
Growing area :

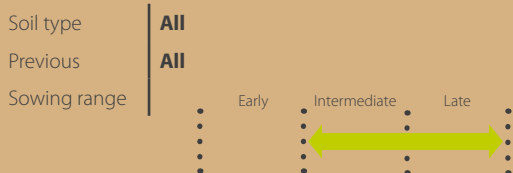


Grekau

+ STRENGTHS

- . Very good baking quality / Extensible type
- . High Specific Weight and Protein content
- . Excellent diseases resistance
- . High yield potential

SOWING*



QUALITY ZOOM



Market access indicators

- . 80 % Superior
- . 66 % Premium

CULTIVATION ADVICE

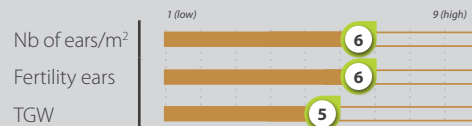
Very hardy, the Grekau variety can allow you to avoid applying one or more fungicides depending on the risks of the year.

PLANTS

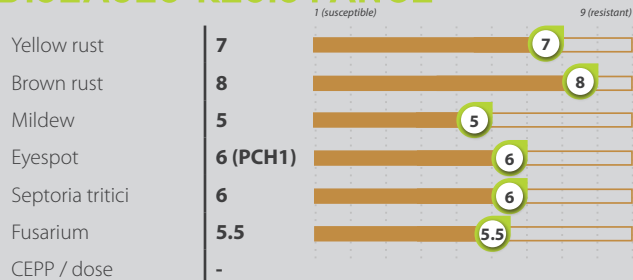
Seasonal type	6	1/2 alternative
Rise earliness	3*	1/2 alternative
Earliness	7.5	Very early
Maturity group	7*	Very early

Frost	1 (susceptible) to 9 (resistant)	(7)
Lodging		5.5
Height	3.5	
Herbicide tolerance	Chlortoluron tolerant	
Mosaïc	Resistant	
OWBM**	Susceptible*	

YIELD COMPONENT



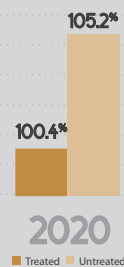
DISEASES RESISTANCE



YIELD PERFORMANCE

FINAL COTATION 102.8%**

Official trial CTPS 2019/20
yield as % of controls Pibrac,
RGT Césario, Tenor, LG
Absalon.



TECHNOLOGICAL QUALITY

Baking quality	BPS (High quality bread wheat) Extensible	Hardness	Medium-Hard
Profil	160-230*	Volume	>1550 cm³
W at 11.5% protein content	0.3-0.8*	Hydratation	60%
P/L at 11.5% protein content	7	Zeleny	
Protein content			